

Radio-Electronics®

ADD-ON ELECTRONICS FOR YOUR CAR

The Truth About Electronic Ignition

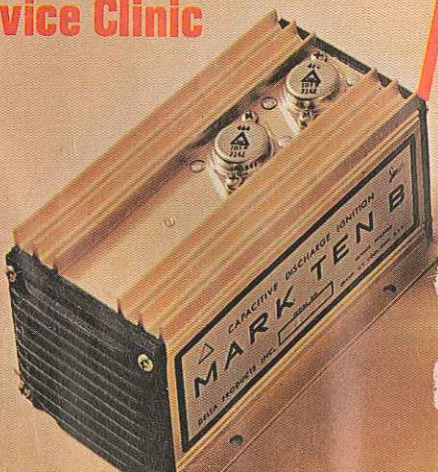
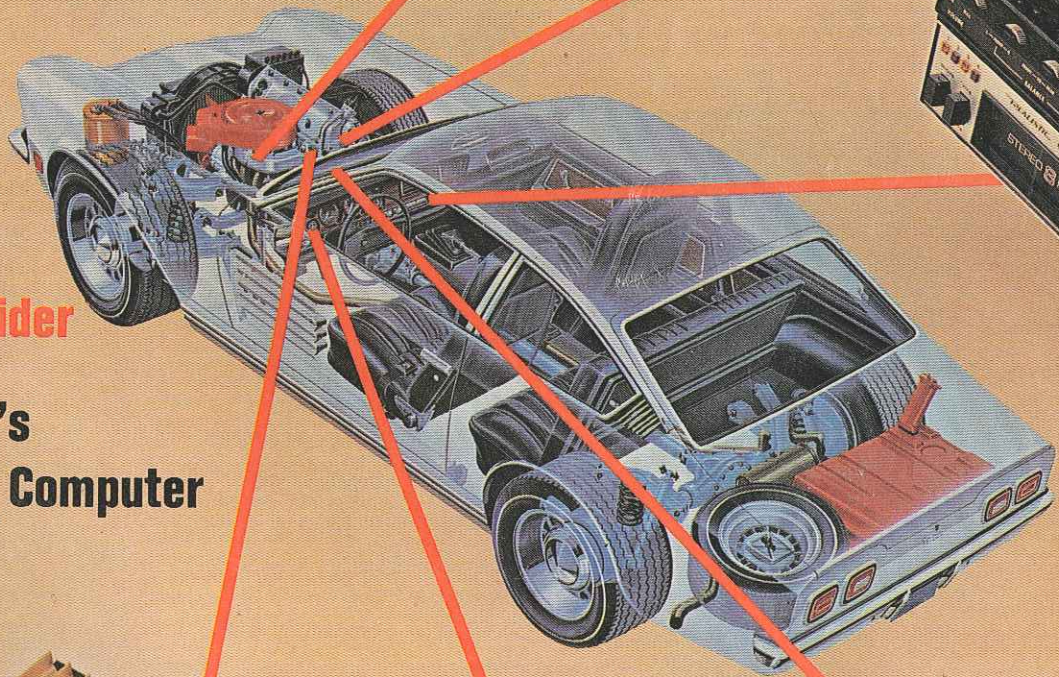
**Car Cassette Players —
See How They Work**

**Build Handy
\$23 TV Tuner Subber**

**Digi-Mod-N
Frequency Divider**

**Don Lancaster's
Photo Printing Computer**

**Jack Darr's
Service Clinic**



Build RE's Digital Printing Computer

Don't leave f-stop thinking outside the darkroom. This photo timer has f-stop settings for the ultimate in timing prints and enlargements

by DON LANCASTER and LEON SCHOENFELD

THE RADIO-ELECTRONIC'S DIGITAL PRINTING Computer (DPC) is a specialized timer for the photo buff who does his own black and white or color printing. It has several brand new circuit features not found on any commercially available device, even those costing many times its price. Unlike any ordinary photo timer, the Digital Printing Computer works directly in quarter stop increments of time. This means it thinks in exactly the same manner that photo paper does. There's now no more guesswork or fancy math involved any more—the computer does it for you. If your prints turn out a half a stop too light, just advance the computer two quarter stop clicks for a perfect print. If you decide to retard your enlarger a stop or two, just click the exposure computer just as much the opposite way, and you're right back where you started—with no guesswork and no math.

The instrument uses all integrated circuits and a very simple switching system that gives permanent calibration and unbeatable long-term accuracy. Both these features are picked up by counting cycles of the stable 60-hertz power-line instead of relying on traditional resistor-capacitor timing schemes that have to be calibrated and drift with age.

You get a range of 29 quarter-stop increments, ranging from 0.5 to 64 seconds, set and read by two overlapping, easy-to-read, red backlit dials. In addition to its "by stops" unique operation, you get all the other features normally found on high-quality timers, including

a safety isolated remote control for foot switches, three-wire inputs, outputs and safety ground, dual-complementary ENLARGER-SAFELIGHT outputs, focus override and an emergency stop panic button.

About stops

Photographic papers work on a logarithmic rather than on a linear basis. This means you *double* the light every time you want to go one stop darker. Thus, going from 1 second to 2 seconds exposure time will make a one stop darker exposure. But, going from 31 seconds to 32 seconds will have practically no effect. It's not the time difference that counts, but how much time or light you add as a percentage of what you already have. If a 1 f-stop difference is a 2:1 time or light ratio, a one-half stop difference would be a 1.41 time or light ratio, and a quarter stop difference would be only a 1.2 time or light ratio. Incidentally, a quarter-stop is cutting things pretty fine—few photo experts could spot a quarter stop change even in critical color work. Table I shows the actual time values you get for each quarter-stop increment.

The DPC is a real digital computer that you program as a frequency synthesizer. It generates the needed times to very high accuracy and in the required log scale quarter-stop increments. Figure 1 shows the block diagram.

The 60-Hz power-line frequency is divided down by six to get a train of 0.1-second reference pulses. These are

counted by two cascaded counters, called the F-STOP counter and the BASELINE counter. The f-stop counter divides the 0.1-second reference pulses to switch selectable basic output times of 0.5, 0.6, 0.7, 0.8, 1, 1.2, 1.4, 1.6, and 2.0 seconds, giving either an exact or extremely accurate approximation to a -1 stop, -3/4 stop, -1/2 stop, -1/4 stop,

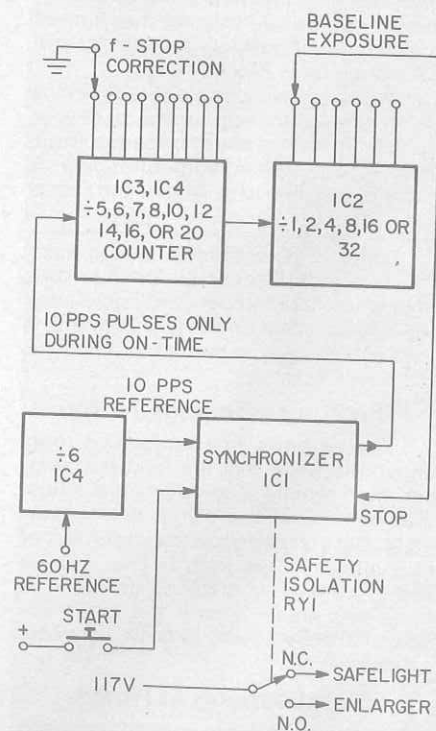
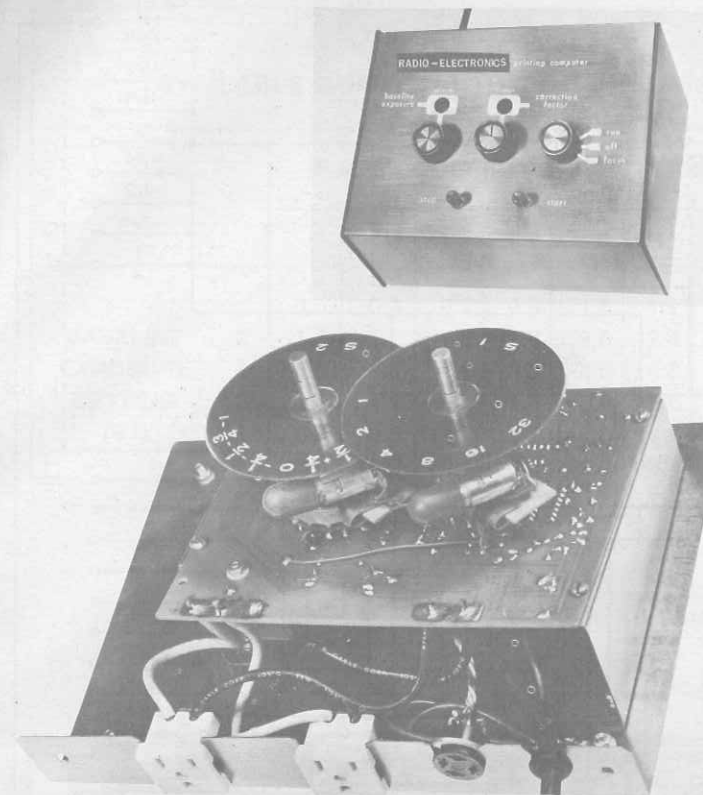


FIG. 1 FUNCTIONAL BLOCK DIAGRAM of the digital printing computer. Four IC's and a printed-circuit board simplify its construction.



baseline exposure, +1/4 stop, +1/2 stop, +3/4 stop, or +1 stop exposure value. The baseline counter extends the f-stop counter's range to 1, 2, 4, 8, 16, or 32 seconds. Together the two give you a continuous range of 0.5 to 64 seconds in

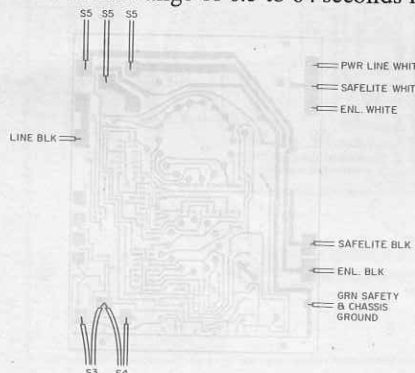


FIG. 2-EXTERNAL COMPONENTS connect to the circuit board as shown in this diagram.

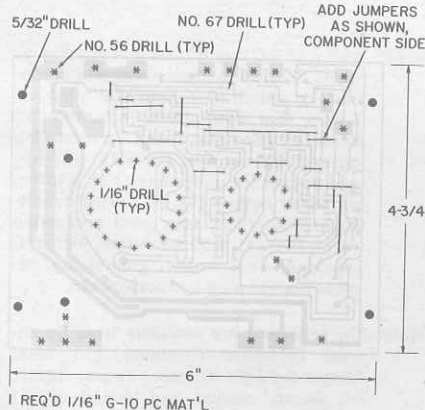


FIG. 3-PC BOARD MECHANICAL DETAILS. Drill as indicated then install the jumpers.

quarter-stop increments. Considerable overlap is provided by the two counters for ease of operation.

The computer acts independently each time as a one-shot counter. Every time the START switch is depressed, a special synchronizer locks the counter to the power-line, loads the proper division ratio into the f-stop counter, resets the baseline counter, and starts the

count process. When the count is finished the synchronizer goes back to its initial or WAIT state. During the counting time, a signal is routed to a safety isolating relay that turns the safelight off and the enlarger on for the timing duration.

The remaining switching is omitted in Fig. 1 for simplicity. The other circuitry lets you bypass the timer for focus-

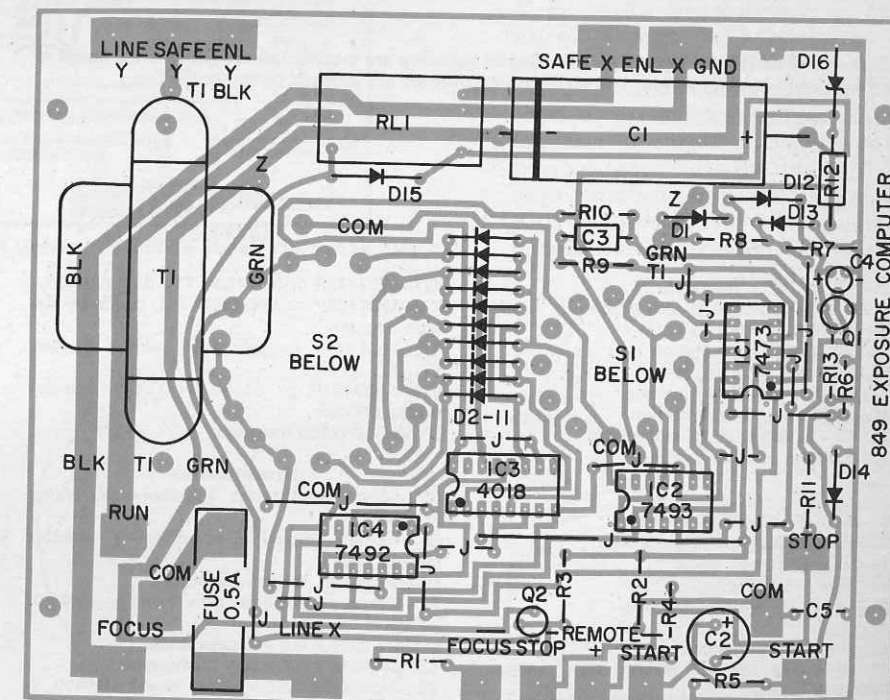


FIG. 4-COMPONENT SIDE OF THE BOARD showing the external connections and the location of major components. Be sure to observe polarity of the diodes and electrolytics.

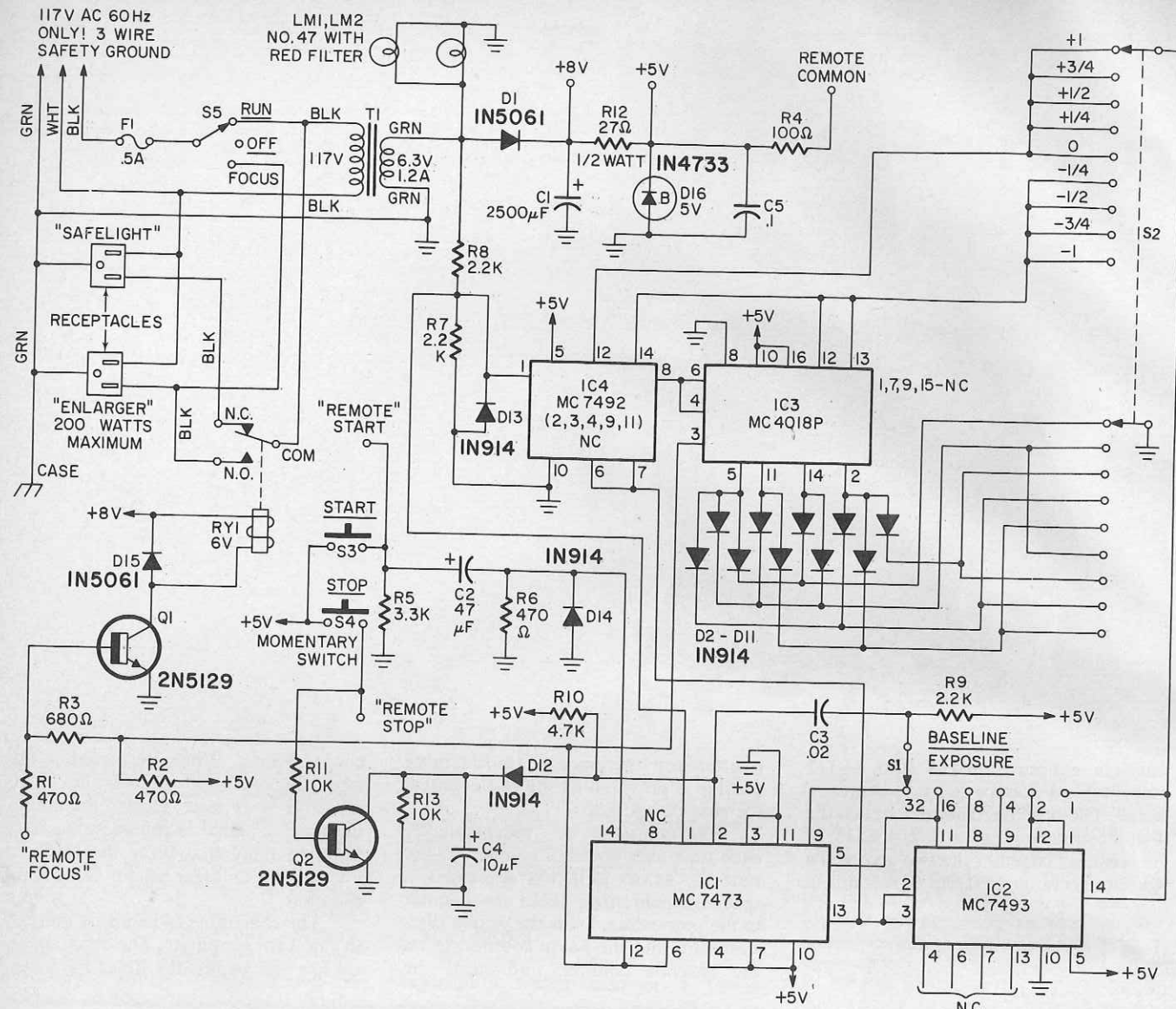


FIG. 5—SCHEMATIC OF THE DPC. The selector switches are mounted directly on the PC board to minimize point-to-point wiring. The IC frequency dividers are clocked by the powerline.

PARTS LIST

Resistors
 R1, R2, R6—470-ohm, 1/4-watt carbon
 R3—680-ohm, 1/4-watt carbon
 R4—100-ohm, 1/4-watt carbon
 R5—3300-ohm, 1/4-watt carbon
 R7-9—2200-ohm, 1/4-watt carbon
 R10—4700-ohm, 1/4-watt carbon
 R11, 13—10,000-ohm, 1/4-watt carbon
 R12—27-ohm, 1/2-watt carbon

Capacitors
 C1—2500 μ F, 10-volt electrolytic
 C2—47 or 50 μ F, 15-volt electrolytic
 C3—0.02 μ F, 50-volt Mylar
 C4—10 μ F, 15-volt electrolytic
 C5—0.1 μ F, 10-volt disc ceramic

Semiconductors
 D1, 15—1-amp, 50 pIV silicon power diode, 1N5061 or equiv.
 D2-14—Silicon computer diode, 1N914 or equivalent
 D16—5.1-volt, 1-watt Zener diode, 1N4733 or equiv.

IC1—MC7473P or SN7473N TTL dual flip-flop
 IC2—MC7493P or SN7493N TTL divide-by-sixteen counter
 IC3—MC4018P programmable binary divider, TTL
 IC4—MC7492P or SN7492N TTL divide-by-twelve counter
 Q1, Q2—2N5129 transistor

Miscellaneous
 RY1—6-volt spdt relay, 300-ohm coil, 2-amp contacts
 S1—1-pole, 6-position non-shorting selector switch
 Mallory 3226J, **Do not substitute.**
 S2—2-pole, 9-position non-shorting selector switch
 Mallory 3229J, **Do not substitute.**
 S3, S4—spst momentary pushbutton
 S5—1-pole, 3-position, rotary selector switch, 2-amp 110 V contacts, non-shorting
 T1—6.3-volt, 1.2-ampere filament transformer, Triad F-14X, Stancor P6134, or equal
 F1—0.5 amp, 3AG fuse and PC mounting clips

LM1, LM2—No. 47 pilot lamp, 6.3 volts, 150 mA.

MISC: 4 1/4" x 6" PC board (See text and Fig. 3, 4 and 5); case, bottom plate, end brackets (2); switch hardware; 1 1/8" push-on knobs; dial assemblies including 3/4" knob (2); (See Fig. 6 and 7); mounting bracket and red filter (APM 1813-27-R5) and socket for pilot lamps (2); 3 prong ac safety outlets (2); PC board mounting brackets (2); Line cord and strain relief; feet (4); 6-32 hardware; jumpers, sleeving, wire, solder, ground lug, remote control plug and socket, etc. . . .

Note: The following are available from Southwest Technical Products, 217 West Rhapsody, San Antonio, Texas, 78216: PC Board, etched and drilled #ET-1 \$6.25. Complete kit of all parts, except case, ETC-1, \$34.25. Any and all individual parts also available.

TABLE 1
AVAILABLE QUARTER STOP TIME INCREMENTS

		F-STOP CORRECTION FACTOR SETTING (S2)								
		-1	-3/4	-1/2	-1/4	0	+1/4	+1/2	+3/4	+1
BASELINE EXPOSURE SETTING (S1)	1	0.5	0.6	0.7	0.8	1.0	1.2	1.4	1.6	2.0
	2	1.0	1.2	1.4	1.6	2.0	2.4	2.8	3.2	4.0
	4	2.0	2.4	2.8	3.2	4.0	4.8	5.6	6.4	8.0
	8	4.0	4.8	5.6	6.4	8.0	9.6	11.2	12.8	16.0
	16	8.0	9.6	11.2	12.8	16.0	19.2	22.4	25.6	32.0
	32	16.0	19.2	22.4	25.6	32.0	38.4	44.8	51.2	64.0

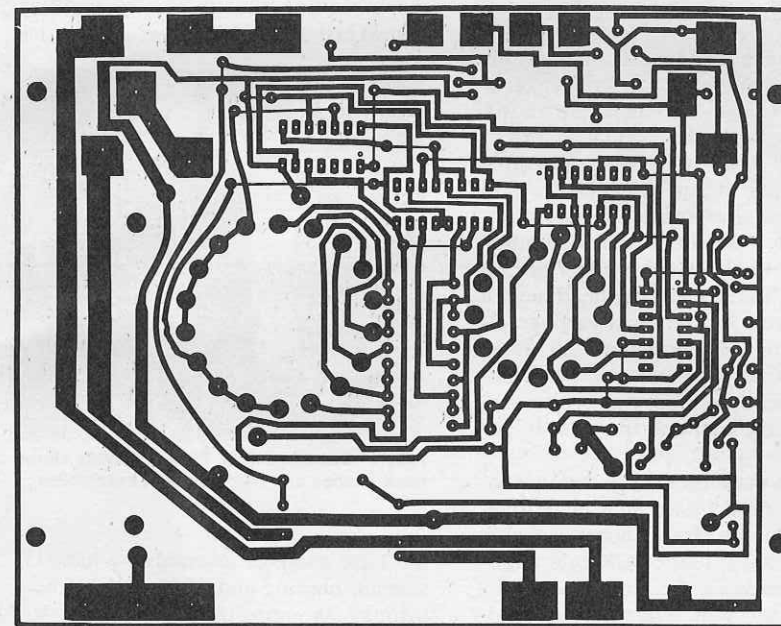


FIG. 6—PATTERN FOR THE PC BOARD. It is 6 inches wide and 4 1/4 inches high overall. Use it to make photographic copy for your board.

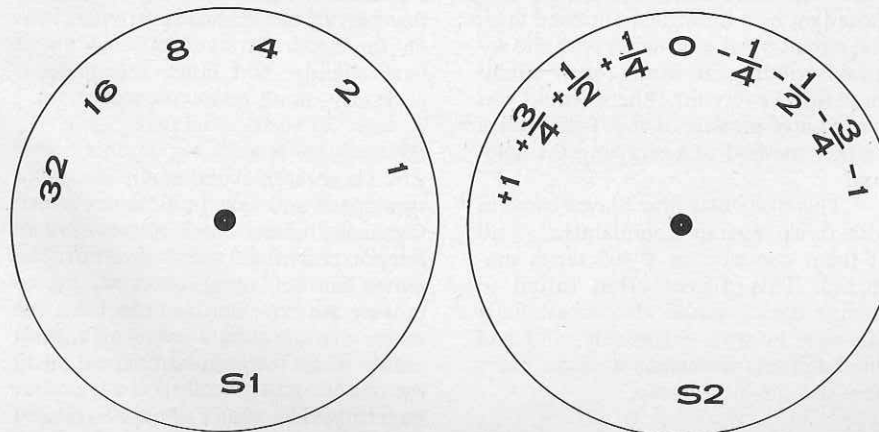


FIG. 7—PATTERNS FOR THE SELECTOR DIALS. The 3-inch circles—as photo negatives—can be mounted on or laminated to thicker plastic.

ing, stop in the middle of a time cycle if you make a mistake, or remotely control any of the functions with a foot switch or two.

The complete schematic and parts list appear in Fig. 5. Note that the two single deck rotary switches do all the time switching. These mount directly on the PC board for very low cost and minimum external wiring.

Construction

A printed-circuit board is a must for this project and may be obtained commercially or the pattern in Fig. 6 may be used. Drilling and layout details are given in Figs. 2 and 3. Fig. 4 shows component and wiring locations.

PC assembly is begun with the sixteen jumpers. These are mounted on the component side exactly where shown. Sleeving should be used on the two longest jumpers. The IC's are mounted next, noting carefully the alignment dot and notch. IC numbering is counter-clockwise from the notch when viewed from the top, starting with pin 1. Use a small iron and fine solder for the IC's, and follow up with a close inspection with a magnifying glass.

The remainder of the components are then mounted on the component side except for the large switches. Note particularly the type and orientation of the diodes, as well as the + and - terminals on the capacitors. Start with the smaller components and finish up with the transformer, large electrolytic, and relay.

The board may then be flipped over and the switches may be mounted. Half of each switch terminal is cut away so the switch terminals may be freely passed through the holes in the PC board. The switches mount on the foil side. The common terminal is wired to a small jumper and then terminated on its foil pad. Be sure the common switch terminal goes "straight through" the other terminals to reach its common pad; otherwise the switch will be jumped one position and the unit will

(continued on page 73)

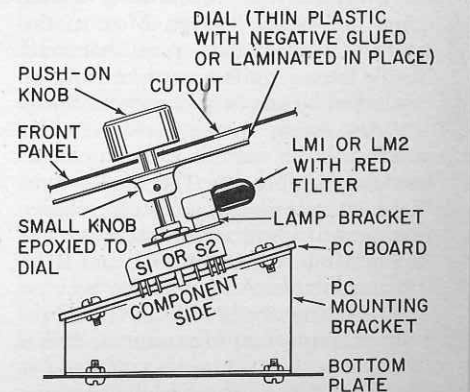
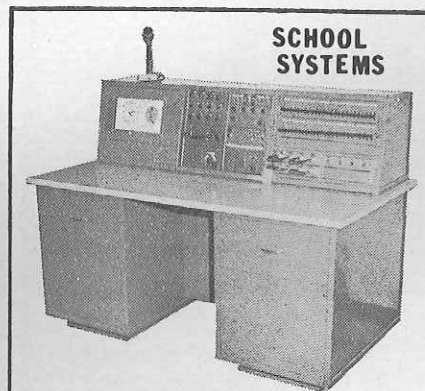


FIG. 8—CONSTRUCTION AND MOUNTING DETAILS for selector switches, dials and PC board.



The Schoolmaster

In the old "one room school days" a single schoolmaster did the job, but in today's electronic age, efficiency demands the "SCHOOLMASTER" by Nelson-Hersfield Electronics. One, two, or three channel systems with loudspeaking or telephone communication housed in table top turret, desk console, or rack cabinet; these fine units bridge the communications gap from a few to over 100 classrooms. Options include six channel time program control, safety fire alarm, civil defense signal, with emergency announce. Audio aides include record, tape or tuner options. For further information, write, wire, or call

Nelson-Hersfield Electronics

1848 WEST CAMPBELL AVE. PHOENIX, ARIZONA 85015
PHONE: 602-264-1348

Circle 64 on reader service card

REPLACEMENT PARTS & ACCESSORIES WELTRON'S GOT 'EM! DO YOU?

plugs & jacks * stereo switches * universal replacement antennas & bases * volt meters * cables * microphones * power supplies * auto stereo accessories * high precision motors * synchronous motors * shaded 4-pole motors *

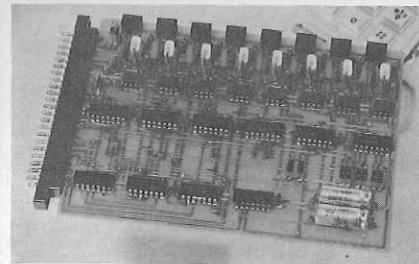
COMPLETE CATALOG AVAILABLE. CALL YOUR DISTRIBUTOR NOW!

Weltron
COMPANY, INC.

514 EAST PEABODY STREET, DURHAM, N.C. 27702
919-682-0333

Circle 65 on reader service card

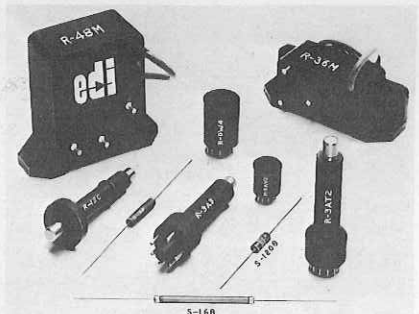
and #; Hi-True outputs also in 4-line BCD, 0-9 only; decoding 7 tones from standard pad—100 mA. Low-True sink drive for bulbs and relays; separate high and low group "hit" out for single tone detection; two-tone "parity" out for simultaneous tone detection. Operates from +



Vdc power supply. Mil-grade G-10 glass-epoxy board; plated-through holes; quality components; metal film resistors; cermet trimmers; tantalum and polycarbonate capacitors. \$169.95.—Lee-Com Associates, P.O. Box 43204, Cleveland, Ohio 44143.

Circle 36 on reader service card

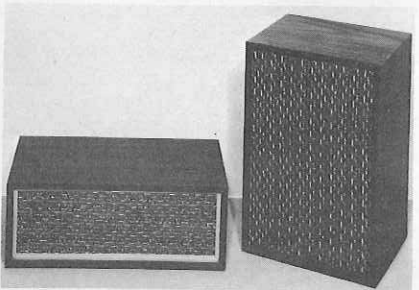
REPLACEMENT PARTS. Solid Tubes. Broad line of four solid-state tube replacements and six renewal parts for color TV. Cool operation, instant starting, longer and more consistent voltage life, prevention of circuit and socket damage and elimination of one potential X-ray source are benefits offered. The Solid-Tubes in-



clude R-3A3 high-voltage rectifier, and R-DW4 damper diode. The renewal parts include R-36M solid-state tripler, R-158 silicon focus-rectifier cartridge, and S-168 selenium focus rectifier. Replacement guide on tubes and parts available free.—Electronic Devices, Inc. 21 Gray Oaks Ave., Yonkers, N.Y. 10710.

Circle 37 on reader service card

ALARM SYSTEM, Gardlarm, provides fail-safe intrusion protection with connections for fire detection, for home and business.

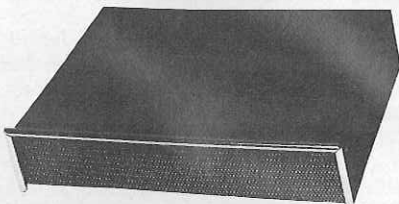


It is sensitive to movement in pre-determined areas, but insensitive to activation

by noise, high-frequency signals, movement of air or small animals. If cable from transactor to receiver unit is disconnected or cut, additional security circuitry instantly triggers an alarm. Transactor-detectors are housed in 6 x 7 x 11 in. wood-grain cabinets resembling hi-fi speakers. One transactor protects an area up to 2,000 sq. ft. They contain a security barrel ignition key switch for remote mounting and relay unit to turn on lights, activate sirens or other devices, etc., when desired.—PRI Electronics Div., Perceptual Remediation Inc., 127 S. Long St., Buffalo, N.Y. 14221.

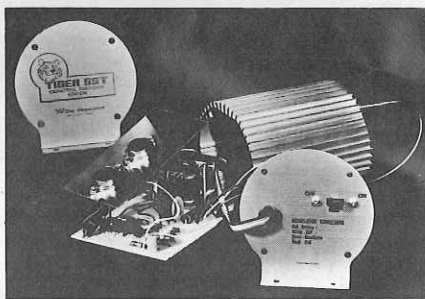
Circle 38 on reader service card

ALARM, Mod-Guard. Ultrasonic intruder alarm detects motion in a 200 to 300 square-foot area at a range of up to 20 feet. High intensity built-in horn emits shrill blasts when activated, or unit can



trigger remote alarms or lights if desired. Features automatic change-over to external batteries if power fails.—MOD Electronics Inc., Box 141, 7275 Croswell Road, Croswell, Mich. 48422. R-E

Circle 39 on reader service card



FROM KIT TO CAR IN 80 MINUTES!

Electronic ignition is "in". Update your car with the TDPS in power, efficiency and reliability — the TIGER SST capacitive discharge ignition (CD).

The TIGER delivers everything other CD's promise — and more: quicker starting, more power, more gas mileage, tune-ups eliminated lifetime plugs and points, reduced repairs and pollution.

The TIGER can be built and installed in your car in 80 minutes. The TIGER is unique! Errors in construction or incorrect installation will not harm the TIGER or the engine. The TIGER will not operate under either condition.

The TIGER comes with a switch for TIGER or standard ignition for 12V negative ground only.

SATISFACTION GUARANTEED or Money Back.

Simpli-Kit \$29.95 — Assembled \$39.95 POST PAID

WE ACCEPT: Mastercharge or BankAmericard. Send check or money order with order to:

Tri-Star Corporation

DEPT. R, P. O. Box 1946
Grand Junction, Colorado 81501
Circle 66 on reader service card

DIGITAL PRINTING COMPUTER

(continued from page 53)

not work. Also be sure the common terminal and its jumper do not short any foil on the board or other switch terminals. After the switch commons are wired and soldered and the switch is seated, the terminals may be clinched on the component side. Finally, the remaining terminals may be soldered in place.

Dial replicas appear in Fig. 7. Figure 8 shows how these + 3/4 mounted to the switch shafts. Pilot lamps and red filters are bracket mounted between the PC board and the dials.

Final assembly

An antique brass and walnut-finished case assembly was used on the prototype, although any suitable enclosure should do the job. It has to be large enough to hold the PC board, the three-wire outlets, and has to have a front panel with two cutouts for the dial display. The additional START, STOP, and SELECT switches are mounted on the front panel, while the line cord, output sockets, and the remote control jack mount on the rear panel. The green safety ground from the three-wire line cord goes both to the case and the two output sockets.

The PC board mounts to the bottom of the units via two brackets. Be very careful to align these brackets so the dials, knobs, pilot lamps, and front panel holes line up. When properly aligned, you should see a red numeral on a black background, properly centered and corresponding to the right switch settings. Push-on knobs complete the front assembly.

The unit may be initially tested with 15-watt red and white lamps in the safelight and enlarger sockets. Use an oscilloscope, a kitchen clock, or a stopwatch to verify that each switch setting is correct. As there are no adjustments or calibration needed, this should be all the checkout required. If you are going to use an enlarger lamp greater than 200 watts, add a suitable high-current relay or triac to the output.

Normally, you start off with a nominal baseline exposure, say eight seconds for a normal black and white print to be dodged and burned on a single pass. You also set the CORRECTION FACTOR dial to ZERO, and run a test strip or a test exposure. If you want a small correction after running these tests, advance or retard the correction factor dial as needed. If you ever get to +1 or -1 on the correction factor dial, simply snap to one higher or one lower baseline exposure position and reset the correction factor dial to zero. This way you get a continuous exposure range. R-E

ELECTRONIC TECHNICIANS!

Raise your professional standing and prepare for promotion! Win your diploma in

ENGINEERING MATHEMATICS

from the Indiana Home Study Institute

We are proud to announce two great new courses in Engineering Mathematics for the electronic industry.

These unusual courses are the result of many years of study and thought by the President of Indiana Home Study, who has personally lectured in the classroom to thousands of men, from all walks of life, on mathematics, and electrical and electronic engineering.

You will have to see the lessons to appreciate them!

NOW you can master engineering mathematics and actually enjoy doing it! WE ARE THIS SURE: you sign no contracts—you order your lessons on a money-back guarantee.

In plain language, if you aren't satisfied you don't pay, and there are no strings attached.

Write today for more information and your outline of courses.

You have nothing to lose, and everything to gain!

The INDIANA HOME STUDY INSTITUTE
Dept. RE-4, P.O. Box 1189, Panama City, Fla. 32401

Circle 67 on reader service card

Unusual tools, hard-to-find items.

Send for free catalog!



Diversified collection-

tools of all kinds precision instruments essential shop items

... convenient one-stop shopping from your desk.

NC Flasher
National Camera
Dept. GBA
Englewood, Colorado, 80110

Circle 68 on reader service card

Great Business Opportunity

Run a Radio Shack Store Under Our "PARTNERS IN PROFIT" PLAN

Apply Now for a Radio Shack Store! We're Willing to Bet On Your Future... If You Are!

Capitalize on your ability, share in the profit, enjoy big income—by going into business with us! Radio Shack needs 300 more stores nationwide to meet the growing demand for its products, and maybe YOU can take over a "Partners In Profit" store—perhaps right in your own community!

\$12-20,000 gets you started. We pay all fixed costs—rent, real estate taxes, depreciation.

So, here you have it—a business where you call most of the shots. You sell stereo, radios, walkie-talkies, hobby kits, test instruments, antennas, tools, batteries, wire, recorders and much more—Realistic, Science Fair, Archer, Micronta—all our exclusive, registered brands.

You'll have the know-how of a thriving 1350-store firm to back you up—and you'll enjoy the added prestige and security of our parent company, the Tandy Corporation, an NYSE-listed, recognized leader among firms in retailing. Act NOW!

As our partner, you're backed by the training programs of a 50-year-old company and the best in creative marketing and advertising. Do your own hiring and control your own local costs and profits! A Security Deposit of

CALL COLLECT OR WRITE:

A. A. Bernabei, V.P.
Radio Shack
2617 W. 7th St.
Ft. Worth, Tex. 76107
PHONE: (817) 335-3711

radio shack Dept. REB-1

A TANDY CORPORATION COMPANY

Rush "Partners in Profit" Details to:

Please Print Name _____ Phone _____
Street _____ Apt. # _____
City _____ State _____ Zip _____

Circle 69 on reader service card